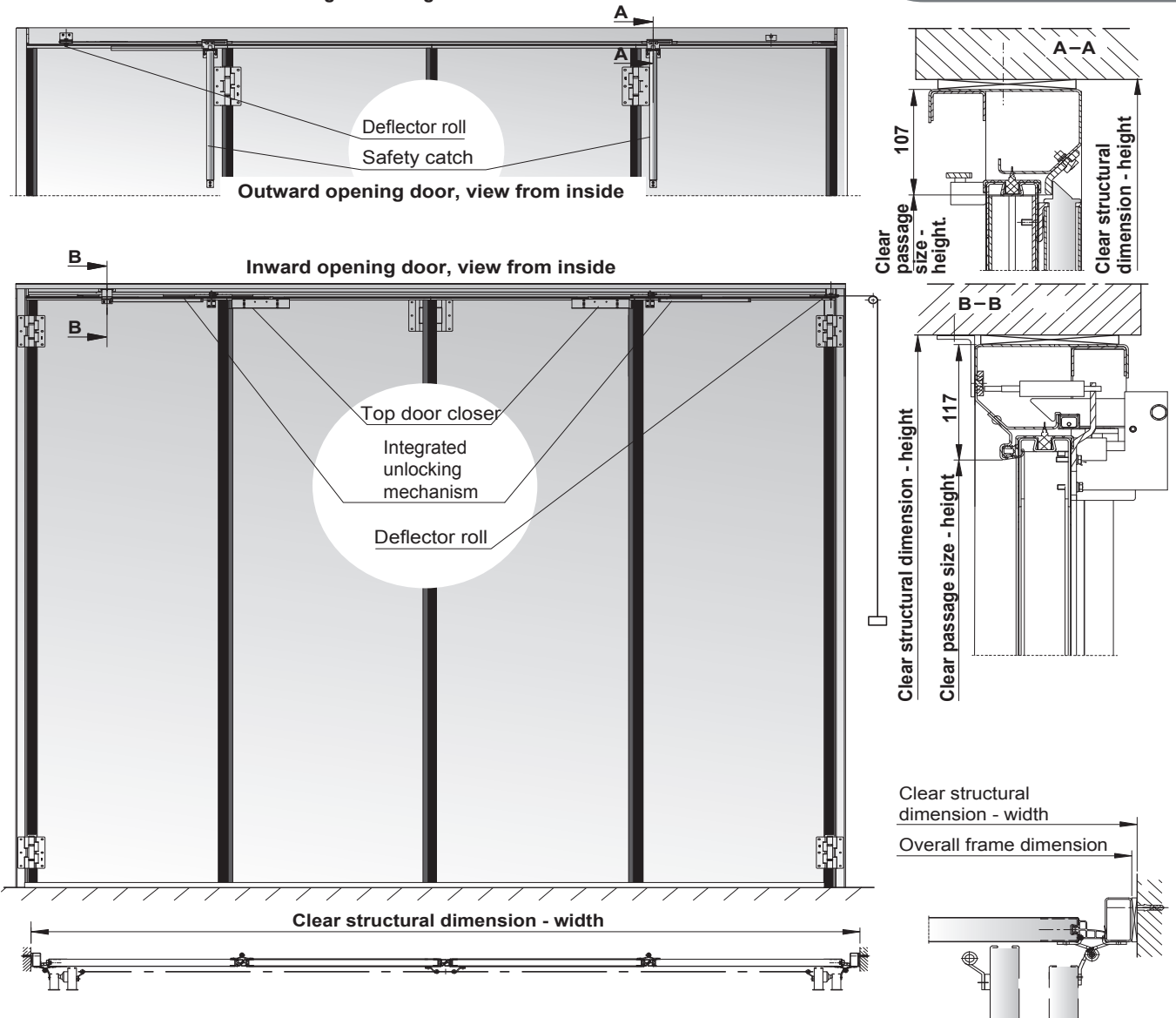


Fire brigade steel folding door

Folding door with spring-operated unlock function as per DIN 14092-1

Application for door type FE „Teckentrup 50“

For detailed overview of installation variants see “Installation, operation and maintenance instructions for fire brigade folding doors“



Fire brigade folding door accessories include:

- 1 x Cable with release handle
- 2 x Top door closer
- 1 x Gas pressure spring
- Door guide
- 2 x Deflector rolls
- 4 x Rubber buffer
- 2 x Door stopper
- (1 x with bottom buffer, 2 x without bottom buffer)
- 1 x Integrated unlocking mechanism

Technical data (also refer to technical data of individual folding door-types)

Possible door leaf connection (coupling) 2:2

Opening via traction cable, manual closing and locking via safety catch

Opening speed adjustable

90° opening angle (opening angle of 180° is not possible)

Inward/Outward opening

Wicket door (door with threshold)

Technical information:

Opening speed approx. 6 sec.

Resistance to wind load (max. door surface)

Door surface ≤ 13.2 m ²	with 965Pa load =	class 3
Door surface > 13.2 m ² ≤ 20.58 m ²	with 620Pa load =	class 2
Door surface > 20.5 m ² ≤ 30.8 m ²	with 415Pa load =	class 1