

Fire-resistant steel vertical lift gate T 90-1-FSA „Teckentrup HT-E“



Text example

Compile and tender according to requirements.
Please refer to technical data below for respective details.
Updated 1st June 2015

Position	No. of pieces	Item	Unit price €	Total price €
		Fire-proof steel vertical lift gate T 90-1-FSA tested in accordance with DIN 4102. Single-leaf door opening upwards. Galvanized door leaf, 63 mm thick (element design). With 3-sided door seal, galvanized. Lateral guide rails with element guide rollers. Automatic closing of the door due to dead weight of the door leaf. Manual opening with the aid of counterweights in the protective box. "Teckentrup HT-E" or equivalent.		
		Ordering dimensions: modular dimensions: _____ mm width and _____ mm height Ordering details: wall and header thickness (concrete _____ mm/masonry _____ mm), headroom (concrete _____ mm/masonry _____ mm - but min. opening height + 1000 mm), right-hand space _____ mm, left-hand space _____ mm		



Technical data

Building authority approval:

Fire-resistant steel vertical lift gate
T 90-1-FSA "Teckentrup HT-E"
Z-6.20-2185
tested as per DIN 4102-5/EN 1634-1

Installation in:

walls made of:

- Masonry min. 240 mm
- Concrete min. 140 mm
- Autoclaved aerated concrete
 - to DIN 4165 min. 175 mm
 - for reinforced min. 200 mm

Approved dimensions:

modular dimensions
width: 1000 – 3700 mm
height: 2000 – 2950 mm

Opening direction:

gate opens upwards

Door leaf:

double-skinned
reinforcement: U-shaped steel
insulation: mineral fibre and
gypsum boards
sheet thickness: 1 mm

Door leaf thickness:

62 mm

Door seal:

- Galvanized seal profiles, 3 mm thick, on 3 sides
- Lateral guide rails with element guide rollers

Counterweight box with counterweights
(located on the right and left-hand side)

Surface:

galvanized door leaf and seal

Fittings:

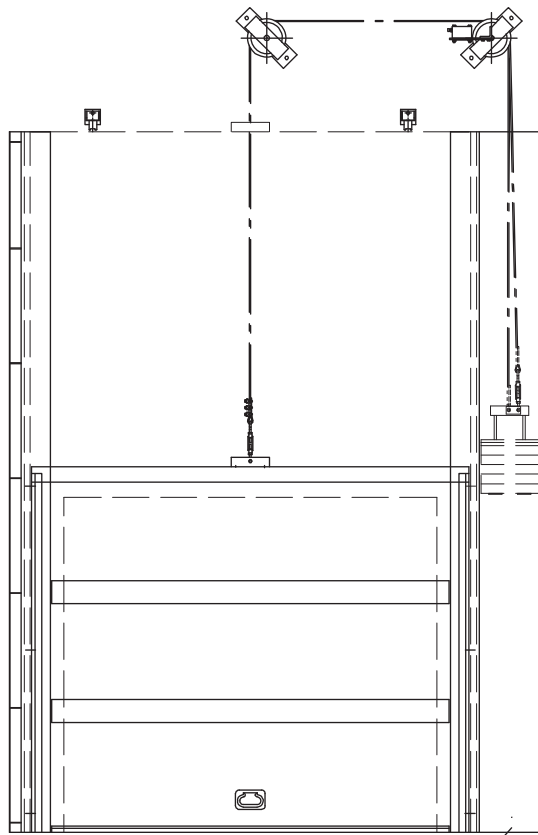
- 2 double wire cables with suspension and safety back-up cable
- double twin running gears
- 2 damping cylinders
- 1 radial damper
- 2 recessed handles

Special equipment:

- Complete hold-open device consisting of:
 - _____ smoke detectors,
 - 1 magnetic clamp, hold-open brake
 - 1 power inverter 220/24 V
 - 1 release key.
 Number of smoke detectors according to DIBt guidelines, issued 1988.
 - Acoustic alarm signal
- Electric drive as an opener in deadman mode

According to approval, fire protection lifting doors are suitable for 2-3 actuations per day.

Fire-resistant steel vertical lift gate T 90-1-FSA „Teckentrup HT-E“



Counterweight with protective box
(optionally on the left-hand side)

