

Steel door dw 42-1 „Teckentrup“

optionally with glazing, optionally with upper casing



Text example

Compile and tender according to requirements.
Please refer to technical data below for respective details.
Updated 1st June 2015



Position	No. of pieces	Item	Unit price €	Total price €
		dw 42-1 steel door. Single-leaf door element. Type of handing DIN right. Door leaf 42 mm thick, rebated on 3 sides. Corner frame, 2 mm thick, with 3-sided seal. Flush mounted door leaf with less protruding hinges. Door leaf and frame galvanized and powder coated, similar to RAL 9002 (Grey white). Mortice lock with latch lever, prepared for profile cylinder. Black plastic handle set. Handle pivoted on bearing, with tumbler insert (Bb) and 1 Bb key. 1 security bolt, 2 KO hinges with ball bearings. „Teckentrup“ or equivalent.		

Technical data

Product: dw 42-1 door „Teckentrup“
Heat insulation in acc. with EN ISO 12567-1
 $U_D = 2.1 \text{ W/m}^2\text{K}$ (Sheet thickness 1.0 mm)

Installation in:

- Masonry
- Concrete
- Autoclaved aerated concrete
- Lightweight construction wall

Dimensions: Width: 625 - 1250 mm
Height: 1750 - 2250 mm

Type of handing: DIN right or DIN left

Door leaf: Double-skinned, **thin rebated** on 3 sides
Door leaf thickness: 42 mm
Sheet thickness: 1.0 or 1.5 mm
Security bolt: min. 1
Insulation: mineral wool

Frame: Corner frame, 2.0 mm thick, with 3-sided seal and bottom sill.
3 wall anchor plugs on each side
Special equipment: block, counter or closed frame

Surface: Galvanized and powder coated door leaf/ frame similar to RAL 9002 (Grey white)

Hinges/Closing devices:

- 2 KO hinges with ball bearings

Fittings:

- Mortice lock with latch lever, prepared for profile cylinder
- Black plastic handle set, handle pivoted on bearing, with tumbler insert and 1 Bb key

Glazing:

Standard glazing:
wire reinforced glass with alu glazing strips
· Type A = 545 x 345 mm
· Type B = 230 x 1360 mm
max. glass pane size up to 0.5 m²

Special glazing:
· rhombus-shaped glazing
· round glazing (rubber clamp profile, steel/stainless steel ring)
· cut-out of choice with light metal strips, max. glass pane size up to 1.5 m²

Glazing:
· VSG laminated safety glass 6 mm
· acrylic glass 6 mm
· ISO glass VSG/VSG 16 mm
· ISO glass, wire reinforced/VSG 16 mm

Special equipment:

- Handle sets / Lever/Knob sets:
 - plastic
 - stainless steel
 - light metal
 - with short plate or rose escutcheon (various makes) with fixed outer knob
- Prepared for rose escutcheon
- Locks
 - Profile cylinder 30.5 + 30.5 mm
 - Panic locks
- Top door closer DIN EN 1154
- Spring hinge
- Floor seal
- Rectangular glazing (special size)
- Round glazing max. Ø 600 mm with rubber clamping profile
- Aluminium ventilation grille
- Steel transformer grille
- Upper casing
- Upper casing with glazing or transformer grille
- Aluminium rain guard

Standard sizes:

Ordering size/ Modular dimensions width x height	Clear opening size (corner frame) width x height
750 x 2000	680 x 1965
875 x 1875	805 x 1840
2000	1965
2125	2090
1000 x 2000	930 x 1965
2125	2090
1125 x 2000	1055 x 1965
2125	2090
1250 x 2000	1180 x 1965
2125	2090
2250	2215

Further qualifications (special equipment):



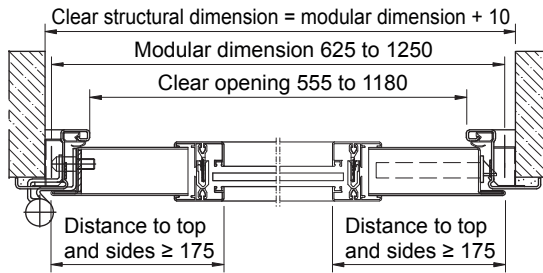
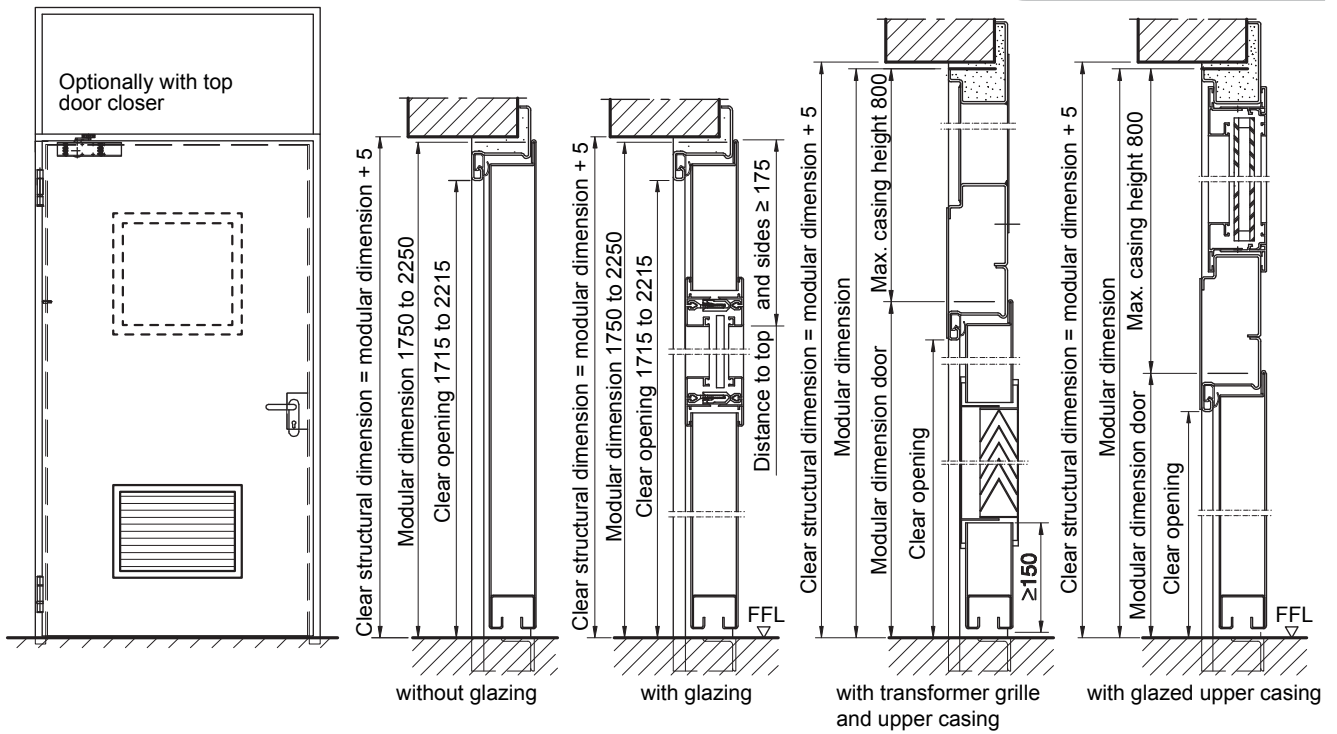
- **Sound insulated** as per DIN EN 20140/717-1
Sheet thickness 1.5 mm (without glazing):
Rw 43dB with bottom buffer
Rw 38dB with retractable bottom seal
Rw 38dB with sliding threshold seal



- **Burglar-resistant** as per DIN ENV 1627 – **WK 2**

Steel door dw 42-1 „Teckentrup“

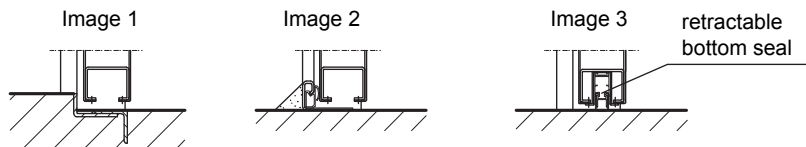
optionally with glazing, optionally with upper casing



DIN left shown, DIN right laterally reversed

Floor connections:

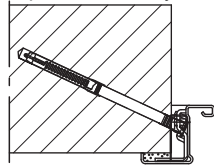
Image 1: with bottom buffer
Image 2: with bottom buffer/seal
Image 3: with bottom seal



- retractable bottom seal
- sliding threshold seal

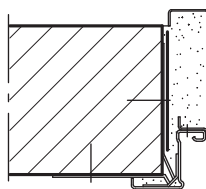
Installation in masonry/concrete walls

Installation in exposed masonry



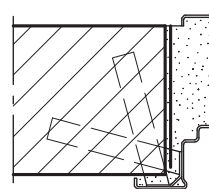
Corner frame

Wall plug assembly



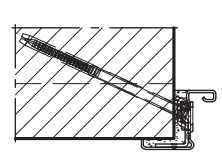
Corner-/counter frame

Wall anchor assembly

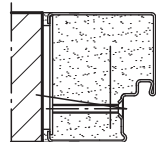


Closed frame

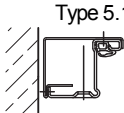
Installation in autoclaved aerated concrete



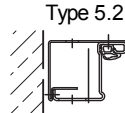
optionally corner frame



Block frame type 4.2



Block frame type 5



Type 5.1 and 5.3 (L) mounted with countersunk screws
Type 5.2 mounted with screws and caps

