

# Steel door dw 62-2 „Teckentrup“

## Steel door dw 62-2 „Teckentrup XL“

optionally with glazing, optionally with upper casing



### Text example

Compile and tender according to requirements.  
Please refer to technical data below for respective details.  
Updated 1<sup>st</sup> June 2015

Position	No. of pieces	Item	Unit price €	Total price €
		Heat-insulated double-leaf steel door dw 62-2, double-skinned, filled with mineral wool. Active door leaf DIN right. Flush mounted door leaf with less protruding hinges. Door leaf/Frame galvanized and prime coated similar to RAL 9002 (Grey white). 62 mm thick, rebated on 3-sides. Corner frame 1.5 mm, with 3-sided seal. Active door leaf with mortice lock with latch lever in accordance with DIN 18250, prepared for profile cylinder. Black plastic handle set. Handle pivoted on bearing, with tumbler insert (Bb) and 1 Bb key. Inactive door leaf with concealed door edge bolt. 1/3 security bolts per leaf, 2 KO hinges per leaf. „Teckentrup“ or equivalent.		



### Technical data

<b>Product:</b>	<b>dw 62-2 door „Teckentrup“</b> Heat insulation in acc. with EN ISO 12567-1 (doors without glazing) $U_D = 1.3 \text{ W/m}^2\text{K}$ <b>dw 62-2 door „Teckentrup XL“</b>
<b>Installation in:</b>	<ul style="list-style-type: none"> <li>• Masonry</li> <li>• Concrete</li> <li>• Autoclaved aerated concrete</li> <li>• Lightweight construction wall</li> </ul>
<b>Dimensions:</b>	<b>dw 62-2 door „Teckentrup“</b> Width: 1375 - 3000 mm Height: 1750 - 3000 mm <b>dw 62-2 door „Teckentrup XL“</b> Width: 1375 - 3000 mm Height: 3001 - 4000 mm
<b>Type of handing:</b>	DIN right or DIN left
<b>Door leaf:</b>	Double-skinned, rebated on 3 sides Door leaf thickness: 62 mm Sheet thickness „Teckentrup“: 0.75/1/1.5 mm „Teckentrup XL“: 1.5 mm Security bolts per leaf „Teckentrup“: 1 Security bolts per leaf „Teckentrup XL“: 3
<b>Frame:</b>	<b>dw 62-2 door „Teckentrup“</b> Corner frame, 1.5 mm thick, with 3-sided seal and bottom sill. Frame fixed with 3 screws per side. <b>dw 62-2 door „Teckentrup XL“</b> Corner frame 2 mm thick with 3-sided seal and bottom sill. 3 wall anchor plugs on each side. Special equipment: block, counter or closed frame
<b>Surface:</b>	Galvanized and prime coated door leaf/frame similar to RAL 9002 (Grey white) Special equipment: <ul style="list-style-type: none"> <li>• Stainless steel</li> </ul>
<b>Hinges:</b>	<b>dw 62-2 door „Teckentrup“</b> <ul style="list-style-type: none"> <li>• 4 KO hinges with ball bearings</li> <li>• Compensation rings for height adjustment</li> </ul> <b>dw 62-2 door „Teckentrup XL“</b> <ul style="list-style-type: none"> <li>• 4 KO hinges (4 mm) with ball bearings</li> </ul>
<b>Fittings:</b>	Active door leaf: <ul style="list-style-type: none"> <li>• Mortice lock with latch lever, prepared for profile cylinder</li> <li>• Black plastic handle set, handle pivoted on bearing, with tumbler insert (Bb) and 1 Bb key</li> </ul> Inactive door leaf: <ul style="list-style-type: none"> <li>• Concealed door edge bolt „Teckentrup“</li> <li>• Overlying door edge bolt „Teckentrup XL“ locking at the top and bottom</li> </ul>

### Glazing:

Standard glazing:  
wire reinforced glass with LM glazing strips  
· Type A = 545 x 345 mm  
max. glass pane size up to 0.5 m<sup>2</sup>

Special glazing:  
· Round glazing (steel/stainless steel ring)  
· Cut-out of choice with LM glazing strips  
max. glass pane size up to 1.5 m<sup>2</sup>

Glazing:  
· VSG laminated safety glass 6 mm  
· acrylic glass 8 mm  
· ISO glass VSG/VSG 21 mm  
· ISO glass, wire reinforced/VSG 21 mm

### Special equipment:

- Handle sets / Lever/Knob sets:
  - plastic
  - light metal
  - stainless steel
  - with short plate or rose escutcheon (various makes) with fixed outer knob
- Locks:
  - profile cylinder 40.5 + 40.5 mm
  - panic locks
- Top door closer DIN EN 1154
  - concealed slide rail-door closer ITS 96
- Floor seals
- Rectangular glazing (special size)
- Aluminium ventilation grille
- Steel transformer grille
- Upper casing
- Upper casing with glazing or transformer grille
- Aluminium rain guard

### Standard sizes

dw 62-2 „Teckentrup“:

Ordering size/ Modular dimensions width x height	Clear opening size (corner frame) width x height
1500 x 2000	1416 x 1958
2125	2083
1750 x 2000	1666 x 1958
2000 x 2000	1916 x 1958
2125	2083
2500	2458
2125 x 2125	2041 x 2083
2250 x 2250	2166 x 2208
2500 x 2500	2416 x 2458

### Further qualifications (special equipment):

- Sound insulated as per DIN EN 20140/717-1  
**Rw 38dB** with retractable bottom seal  
**Rw 37dB** with sliding threshold seal  
**Rw 38dB** with bottom buffer and seal



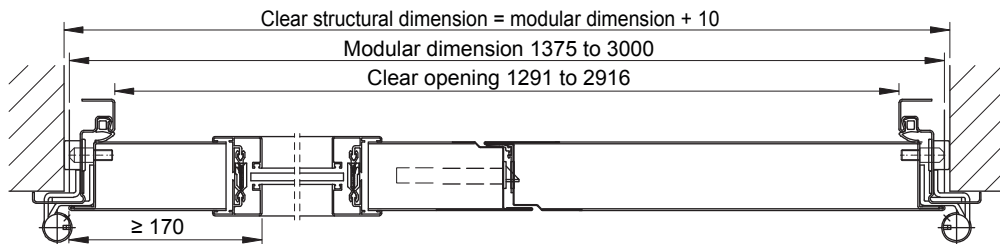
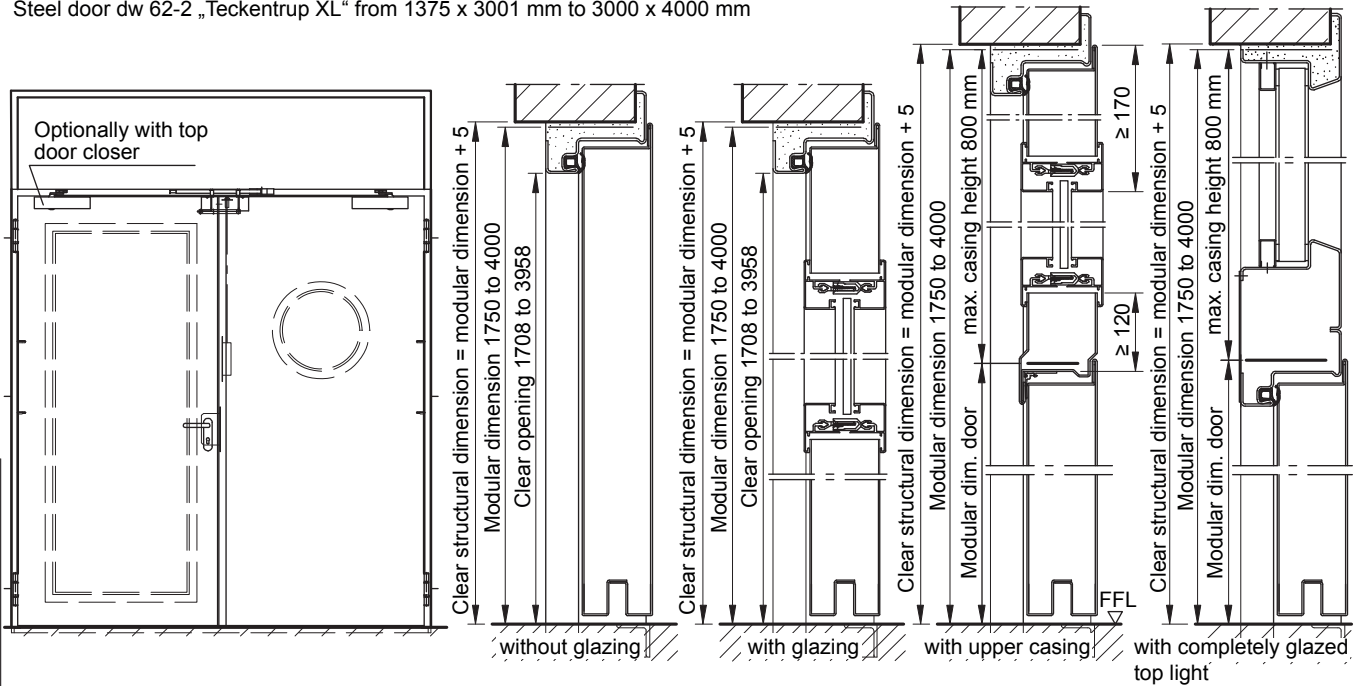
# Steel door dw 62-2 „Teckentrup“

# Steel door dw 62-2 „Teckentrup XL“

optionally with glazing, optionally with upper casing



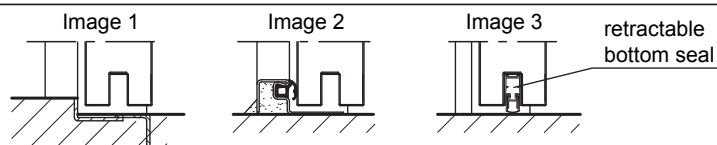
Steel door dw 62-2 „Teckentrup“ up to 3000 x 3000 mm  
 Steel door dw 62-2 „Teckentrup XL“ from 1375 x 3001 mm to 3000 x 4000 mm



Active door leaf DIN left shown, active door leaf DIN right laterally reversed

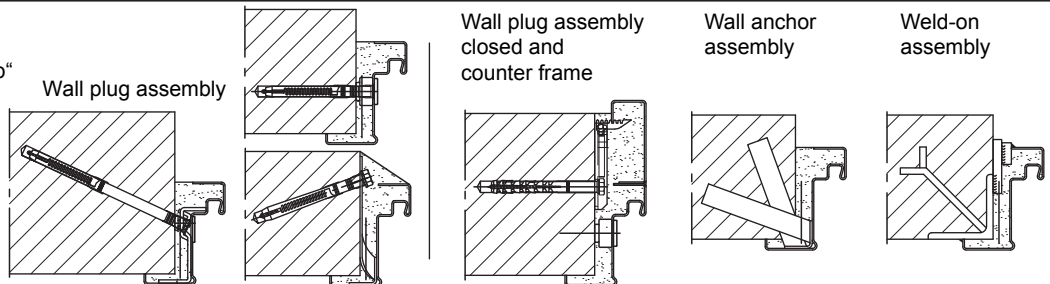
### Floor connections:

Image 1: with bottom buffer  
 Image 2: with bottom buffer/seal  
 Image 3: with bottom seal  
 (smoke-proof door with top door closer)



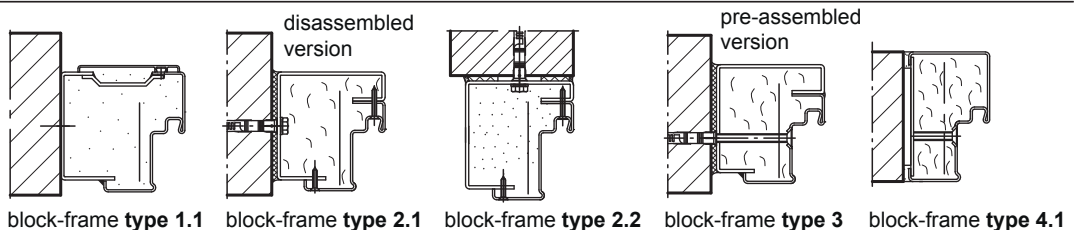
### Installation in masonry/ concrete walls. Attention:

Installation dw 62 „Teckentrup“ shown: frame fixed with screws  
 (dw 62 „Teckentrup XL“ : frame fixed with wall anchor plugs)

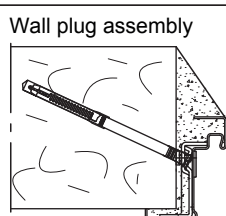


### Installation with block frame

Flush installation between concrete walls/ masonry walls



### Installation in autoclaved aerated concrete walls



Installation in lightweight stud walls  
 Installation dw 62 „Teckentrup“ shown

