

Sound-insulated steel door

dw 67-1/HS „Teckentrup“

up to $R_w = 57$ dB

dw 67-1/S „Teckentrup“

up to $R_w = 53$ dB



Text example

Compile and tender according to requirements.
Please refer to technical data below for respective details.
Updated 1st June 2015

Position	No. of pieces	Item	Unit price €	Total price €
		dw 67-1/S sound-insulated door tested in accordance with DIN EN 20140. Single-leaf door element. Type of handing DIN right. Door leaf/ Frame galvanized and prime coated similar to RAL 9002 (Grey white). 67 mm thick, rebated on 3-sides, thick rebate with rebate seal. 3-sided corner frame, 2 mm thick, with double sliding threshold seal (53 dB). Mortice lock with latch lever in acc. with DIN 18250, prepared for profile cylinder. FS round handle set, black (plastic). Handle pivoted on bearing with tumbler insert (Bb) and 1 Bb key. 2 three-piece KO hinges with ball bearings. „Teckentrup“ or equivalent.		



Technical data

Standard: Tested as per DIN EN 20140
Evaluation in acc. with DIN EN ISO 717-1

Installation in:

- Masonry
- Concrete
- Autoclaved aerated concrete
- Lightweight stud wall
- Wooden frame construction

Sound insulation of the wall =
Sound insulation of the door + ≥ 10 dB

Dimensions: (special sizes)

Width: 750 - 1500 mm
Height: 1750 - 3000 mm

Type of handing:

DIN right or DIN left

Door leaf:

Double-skinned, **thick rebated** on 3 sides and 3-sided rebate seal

dw 67-1/HS:

- with double retractable bottom seal **55 dB** (Standard)
- with double sliding threshold seal and base profile **57 dB**

dw 67-1/S:

- with double retractable bottom seal **50 dB** (Standard)
- with double sliding threshold seal and base profile **53 dB**

The specified values relate to a maximum MD-height of 2500 mm.
Approved for escape routes and emergency exits.

Door leaf thickness: 67 mm
Security bolt: 1
Reinforcement: flat steel

Frame:

3-sided corner frame, 2 mm thick with bottom buffer strip and 3-sided seal
3 wall anchor plugs on each side.
Special equipment:
Counter-, closed- or block frame

Surface:

Door leaf/Frame galvanized and prime coated, similar to RAL 9002 (Grey white).

Hinges and closing devices:

- 2 three-piece KO hinges with ball bearings

Fittings:

- Mortice lock with latch lever in acc. With DIN 18250, prepared for profile cylinder
- FS round handle set, black (plastic). Handle pivoted on bearing, with tumbler insert (Bb) and 1 Bb key

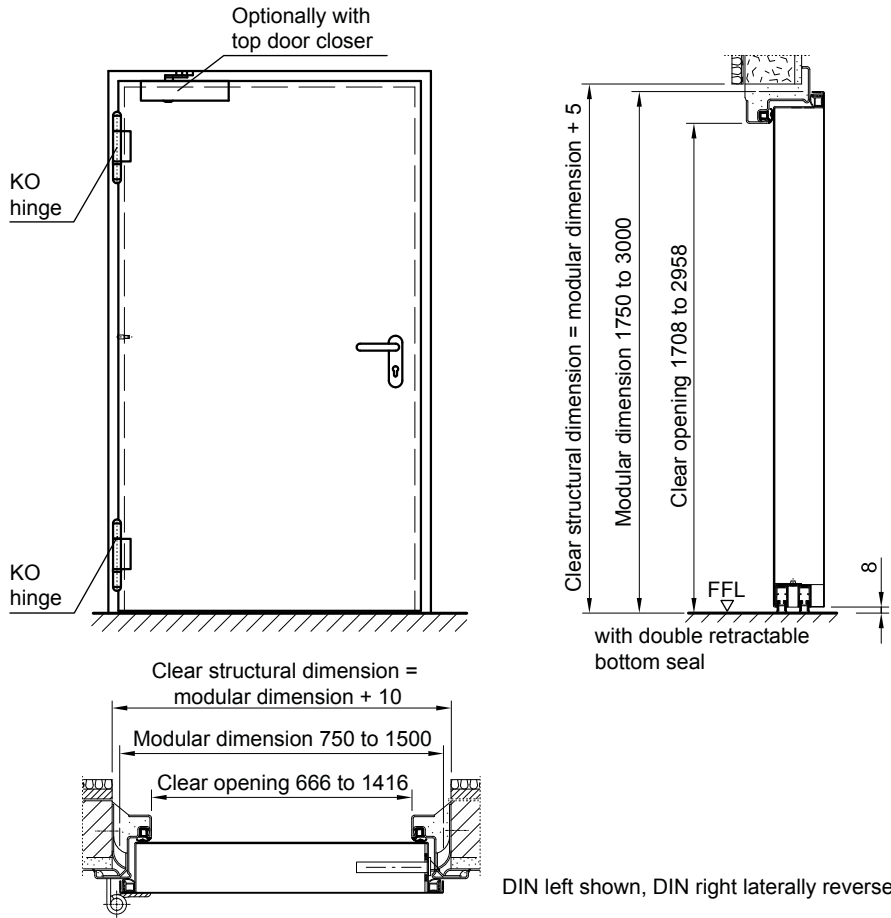
Special equipment:

- Handle sets / Lever/Knob sets:
 - plastic
 - light metal
 - stainless steel
 - with short plate or rose escutcheon (various makes)
- Locks:
 - Profile cylinder 50.5 + 35.5 mm
- Top door closer DIN EN 1154
- Panic locks
- Panic bar handle

Sound-insulated steel door

dw 67-1/HS „Teckentrup“ up to $R_w = 57$ dB

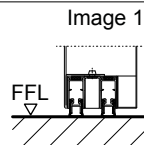
dw 67-1/S „Teckentrup“ up to $R_w = 53$ dB



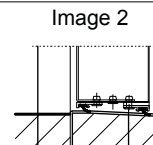
Floor connections:

Image 1: with double retractable bottom seal

Image 2: with double sliding threshold seal and base profile



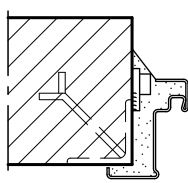
dw 67-1/HS = 55 dB
dw 67-1/S = 50 dB



dw 67-1/HS = 57 dB
dw 67-1/S = 53 dB

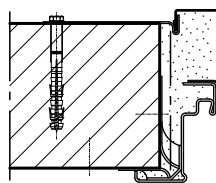
Installation in masonry/ concrete walls
concrete walls
masonry walls

Weld-on assembly



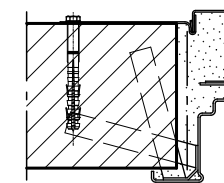
Corner frame

Wall plug assembly



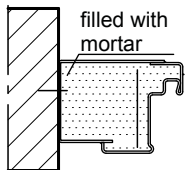
Corner frame with counter frame

Wall anchor assembly



Installation with block frame
Flush installation between concrete walls, masonry walls

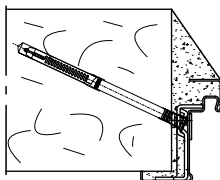
Standard



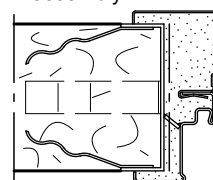
Block frame type 1.2

Installation in autoclaved aerated concrete walls

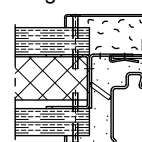
Wall plug assembly



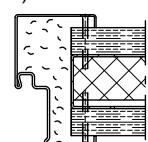
Wall anchor assembly



Installation in installation walls
(lightweight construction stud walls)



Corner frame



Closed frame